

INSIDE Masters of the American West • SoA: California • Historic Native American Art

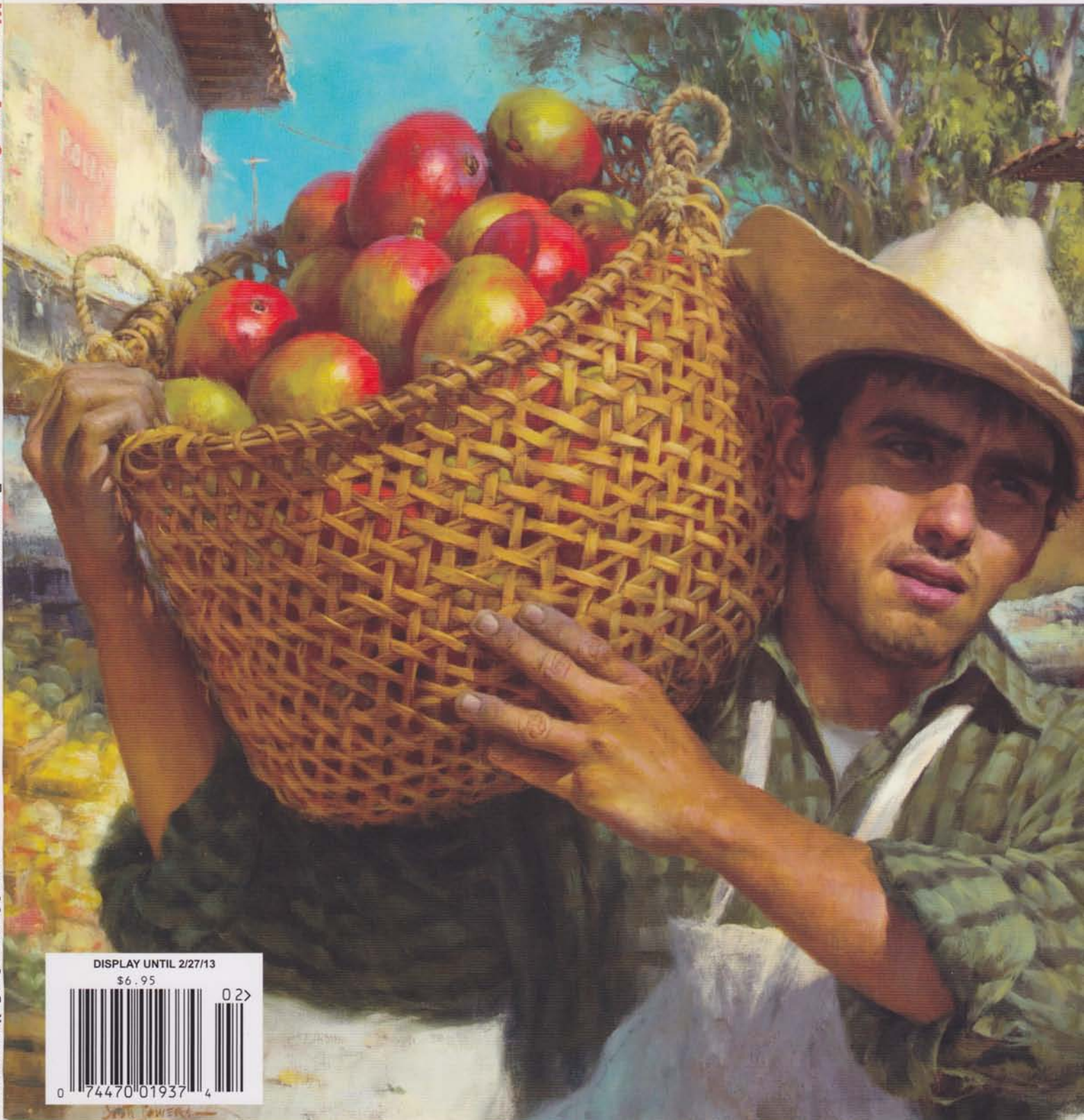
FEBRUARY 2013

Previews of Works For Sale at Upcoming Shows

WESTERN ART

COLLECTOR

66



DISPLAY UNTIL 2/27/13

\$6.95

02 >



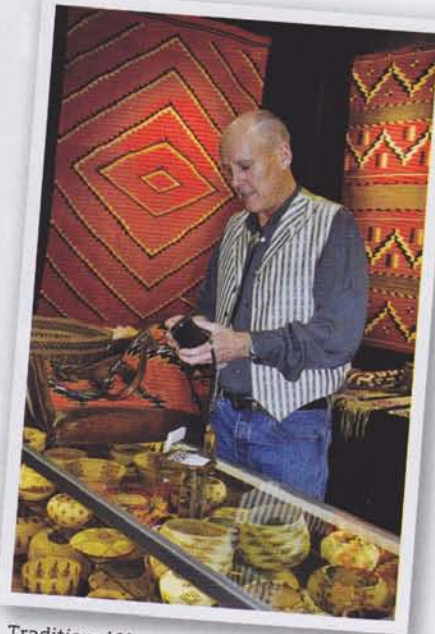
0 74470 01937 4

Indigenous Collectibles

Marin Show: Art of the Americas marks 29 years with an array of antique and contemporary works.



Pottery, basketry and jewelry pieces are among the one-of-a-kind works available at the *Marin Show*.



Traditional Navajo weavings grace the walls of the *Marin Show*.

Featuring a compendium of antique American Indian, Pre-Columbian, Spanish Colonial and contemporary American Indian art, the *Marin Show* attracts top dealers, passionate collectors, artists, and the culture-curious from around the world.

The show's main floor will house antique artifacts, and the adjacent hotel ballroom will offer contemporary Native and Latin American objects, including textiles, paintings, jewelry, pottery, baskets, sculpture, beadwork, books and photography in a wide range of prices for first-time buyers as well as seasoned collectors. The Marin Museum of the American Indian will also present an extensive display honoring the rich history of the area.

"The Museum of the American Indian has participated in the KR Martindale *Marin Show: Art of the Americas* for many years," says Colleen Hicks, the museum's executive

director. "Native American art and craft is extraordinarily beautiful and the diversity of the *Marin Show* showcases the creativity and



Deer Basket, Panamint tribe of California, c. 1920, 8" (diameter) x 3".

ingenuity of tribes across America."

Artist and actor Michael Horse, whose work *Counting Coup* will be available at the show, stressed the cultural importance in the ledger work within the native tradition.

"They are about freedom. Imagine you're on the reservation and someone says you can't go out of it, you can't dance, you can't pray, you can't speak your language," he states, "or they are about the repression of being on the reservation—kind of like the blues."

Horse reiterated that prior to 1860, native paintings depicting important historical events and the calendar were completed on hide, which could be rolled up and which traveled well. When tribes were introduced to paper—primarily ledger paper, but sometimes old bible pages or the occasional love letter—brought from Westerners, the paintings were completed in this new way.



Michael Horse, *Counting Coup*, watercolor painting on ledger paper, 18 x 22"



F.A. Rinehart, Sioux Indian with bone necklace, c. 1890, original photograph, Omaha, NE, 1899, No. 524.

"To 'count coup' means to face an enemy...The handprint means to count coup," Horse says. "To me, over the years, it means to face anything, battle with illness, diversity, jobs. It means I'm not afraid of it. I will go right up to this and face it. That symbol is in a lot of my paintings. It's very powerful."

On Sunday at 10 a.m., The Friends of Ethnic Arts presents *Mississippian Effigy Pipes: Provenance, Style, and Iconography* by speaker Vin Steponaitis, professor of Anthropology, director of the Research Laboratories of Archaeology, and chair of the Curriculum in Archaeology at the University of North Carolina at Chapel Hill. Admission price includes the lecture.

In addition, an Opening Night Preview on Friday, February 22, from 6:30 to 9 p.m., will benefit Homeward Bound, Marin County's

primary provider of shelter and residential services for homeless families and individuals. Tickets for the Opening Night Preview are \$25; advance purchase suggested at www.marinshow.com. *Western Art Collector* magazine is a media sponsor of the *Marin Show*.

Marin Show: Art of the Americas

When: Opening Night Preview, Feb. 22, 6:30-9 p.m.; Show, Feb. 23, 10 a.m.-6 p.m.; Feb. 24, 11 a.m.-5 p.m.

Where: Marin Center Exhibit Hall, 10 Avenue of the Flags, and at the Embassy Suites, 101 McInnis Pkwy, San Rafael, CA 94903

Tickets: \$15, including lecture.

Information: (310) 822-9145, www.marinshow.com